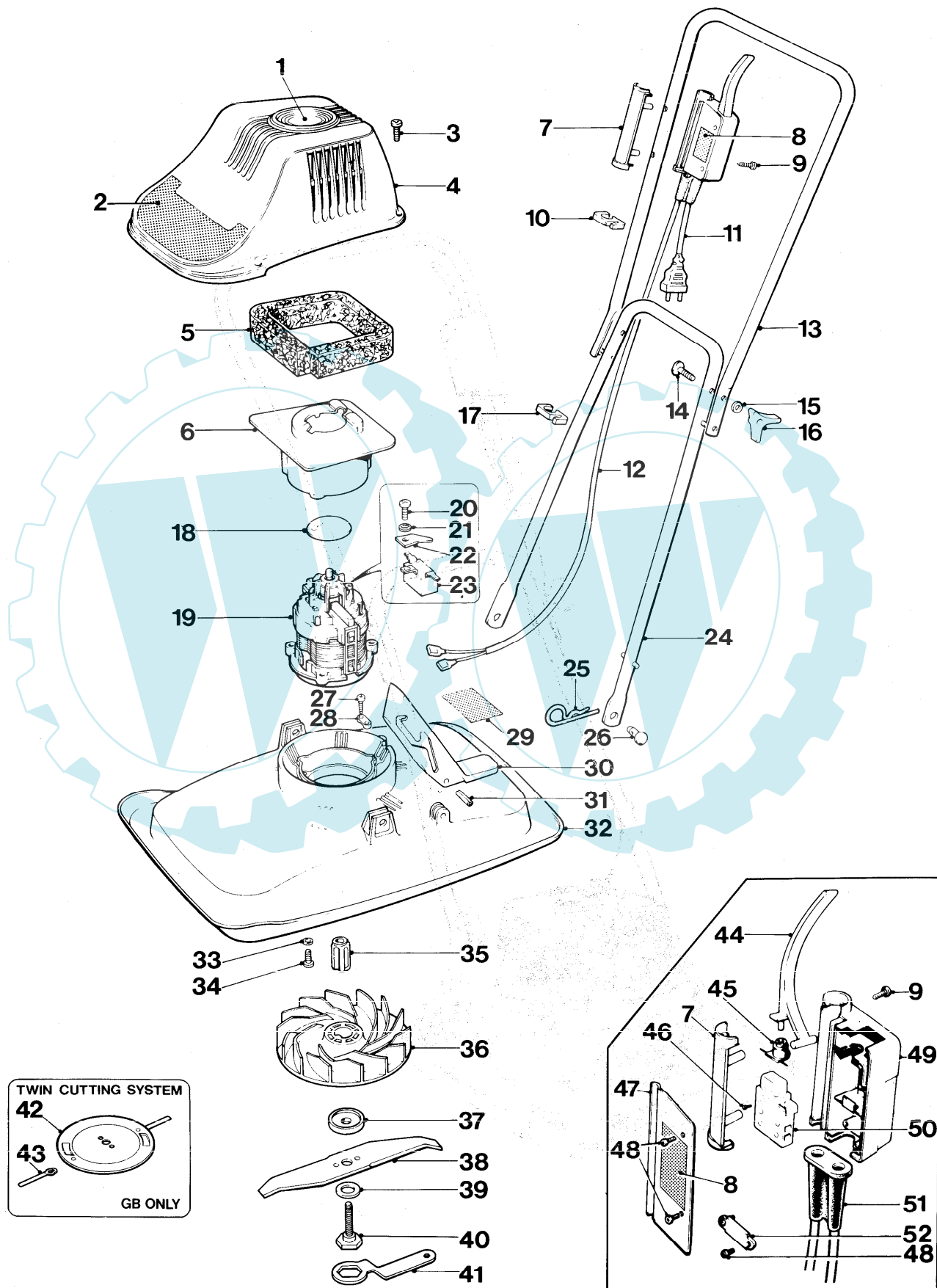


Flymo

DLE-4 TWIN 9635155





DLE-4 TWIN 9635155

KEY No.	PART No.	DESCRIPTION	QUANTITY	COMMENTS/ APPLICATION	KEY No.	PART No.	DESCRIPTION	QUANTITY	COMMENTS/ APPLICATION
1	5126140-01/0	LENS	1		41	5130127-00/3	SPANNER	1	
2	5126237-00/6	LABEL COWL DLE	1		42	5137557-00/4	DISC ASSY	1	
3	5146824-00/7	SCREW	4	ALT USE 5147665-00/4	43	5148257-02/4	CUTTER PLASTIC LONG LIFE	2	
4	5126375-03/8	COWL ASSY C/W LENS	1	ALT USE 5126375-06/7	44	5136182-01/0	LEVER SWITCH	1	
5	5146580-00/5	FILTER	1		45	5130406-01/9	SEAL CONE	1	
6	5116524-03/3	FILTER SUPPORT	1		46	5141605-00/5	SCREW	4	
7	5126290-00/5	SWITCHBOX RETAINER 16mm	1		47	5116495-00/2	SWITCHBOX COVER	1	
8	5147942-00/6	LABEL SWITCHBOX LOCK OFF	1	GB	48	5146672-00/0	SCREW GKN POLYMATE	4	
9	5146672-00/0	SCREW GKN POLYMATE	2		49	5116494-03/9	SWITCHBOX BODY 16mm	1	
10	5140482-00/0	CABLE CLIP SMALL	1		50	5136674-01/6	SWITCH ON/OFF LOCK OFF	1	KOPP 2412.04 OR 2412.13
11	5136621-00/9	LEAD TERMINAL C/W PLUG	1	GB	51	5141584-01/0	SLEEVE PROTECTION	1	
12	5147001-01/9	LEAD INTERNAL	1	ALT USE 5147001-24/1	52	5146616-00/7	CLAMP CABLE	1	
13	5126242-03/0	HANDLE UPPER PLASTIC COATED	1						
14	5140607-00/2	BOLT HANDLE ¼ UNC×45LG	2						
15	5140266-00/7	WASHER	2						
16	5140690-00/8	KNOB WING	2						
17	5140863-01/9	CABLE CLIP LARGE	1						
18	5146469-00/1	WARNING DISC	1	ALT USE 5146469-01/9					
19	5126433-01/9	MOTOR 240 VOLT	1						
20	7241293-61/7	SCREW THREAD FORMING	1						
21	7352136-51/4	LOCKWASHER	1						
22	113721-00/5	CLIP	1						
23	113030-01/9	SUPPRESSOR 0.15 MF	1						
24	5126394-01/3	HANDLE LOWER	1						
25	5140423-00/4	PIN RETAINING	2						
26	5140092-01/5	PIN LOCKING	2	ALT USE 5140092-00/7					
27	5146941-00/9	SCREW HI-LO 04.32×16LG PAN	2						
28	5140705-00/4	CABLE CLAMP	1						
29	5146467-00/5	LABEL WARNING ELECTRIC	1	GB					
30	5116389-01/7	LEVER UP STOP	1	ALT USE 5116389-04/1					
31	5147029-01/0	ROLL PIN	1						
32	5106204-00/0	HOOD 30cm LESS UPSTOP LEVER	1						
	5147856-00/8	HOOD 30cm C/W UPSTOP LEVER	1	ALT USE 5147856-02/4					
33	5140266-00/7	WASHER	3						
34	5141585-00/9	SCREW ¼" -20UNC×19LG	3						
35	5136297-00/8	INSERT IMPELLER	1						
36	5116375-01/4	IMPELLER	1						
37	5136240-01/6	BLADE SPACER	3						
38	5126439-00/8	BLADE 30cm	1						
39	5140516-00/5	ANTI FRICTION WASHER (PTFE)	1						
40	5136242-01/2	BLADE BOLT	1						

PRODUCT VARIANT

9635155-25 GB

When no application details are shown the part applies to all countries.